

Polar Bear fun facts.

Polar Bears are the biggest meat eating animals in the world.

They live in the Arctic and spend much of their life swimming the icy water. They don't feel the cold due to their thick fur. They also have a layer of fat under their skin which helps to keep them warm.

Baby polar bears are born weighing less than a kilogram and have very little fur. Cubs stay with their mother until they are approximately 2 ½ years old.

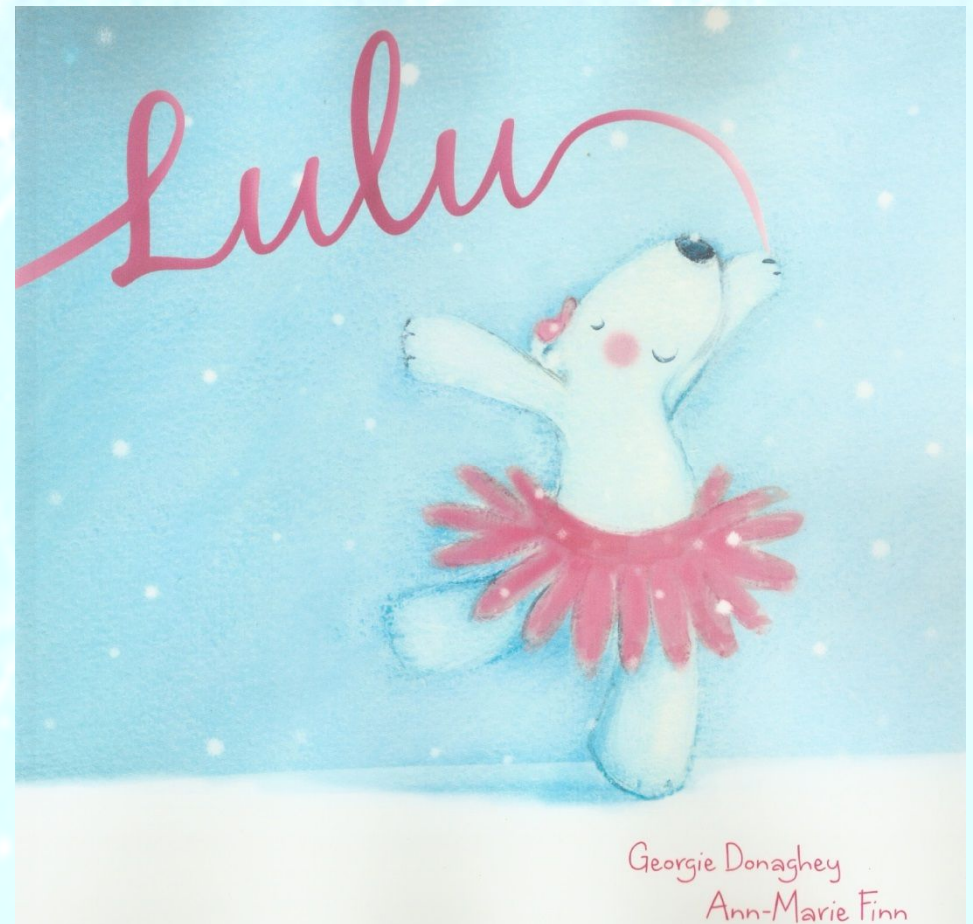
Polar bears swim using their large front paws to propel themselves through the water and their back legs to steer.

Humans are polar bears only predator.

Polar bears can swim up to 161 kilometers at a time.

Adult females can weigh up to 272 kgs while males can weigh up to 680 kgs.

International Polar Bear day is celebrated on 27th of February each year.



Lulu

Georgie Donaghey (author)
Ann-Marie Finn (illustrator)

Activity Book

Created by Georgie Donaghey

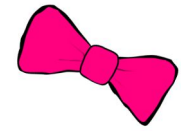


Lulu Slice.

3 tbsp butter
250 gms marshmallows (white)
6 cups of Rice Bubbles or equivalent

Method:

Line a shallow tray with baking paper.
Place rice bubbles into a large mixing bowl.
Melt the butter on low heat in a saucepan.
Add marshmallows to butter, stir until ingredients are melted. Add melted butter and marshmallow mix to the rice bubbles. Mix until combined.
Firmly press mixture into lined baking tray. (Wet hands will avoid mix sticking to your fingers when lining tray.)
Sprinkle with 100's & 1000's, mini M&M's or other choice.
Place in the fridge to set.
Once set, cut into desired shape.



POLAR BEAR PUPPET

Materials

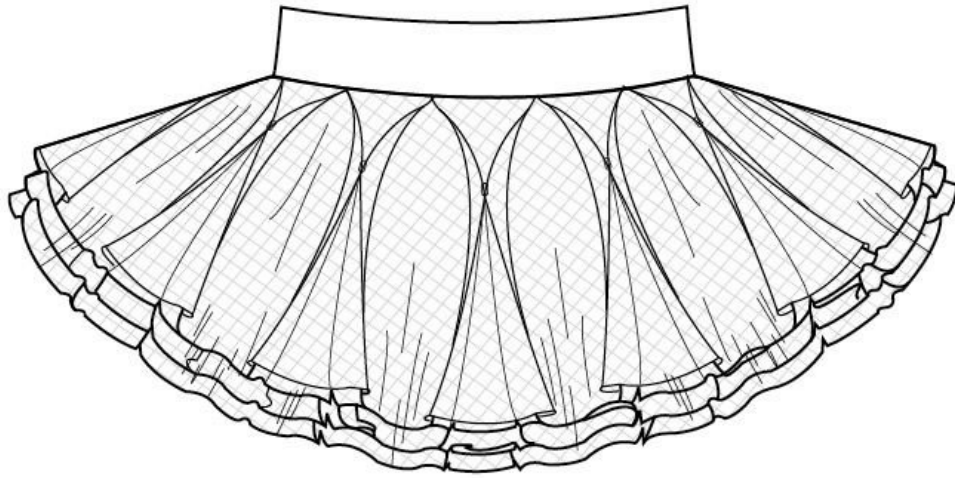
1 x white cup (Styrofoam or plastic)
1 x cotton ball
2 x googly eyes
Glue
1 x sheet of black craft paper
1 x sheet of white craft paper
1 x black texta or marker
Scissors

Instructions:

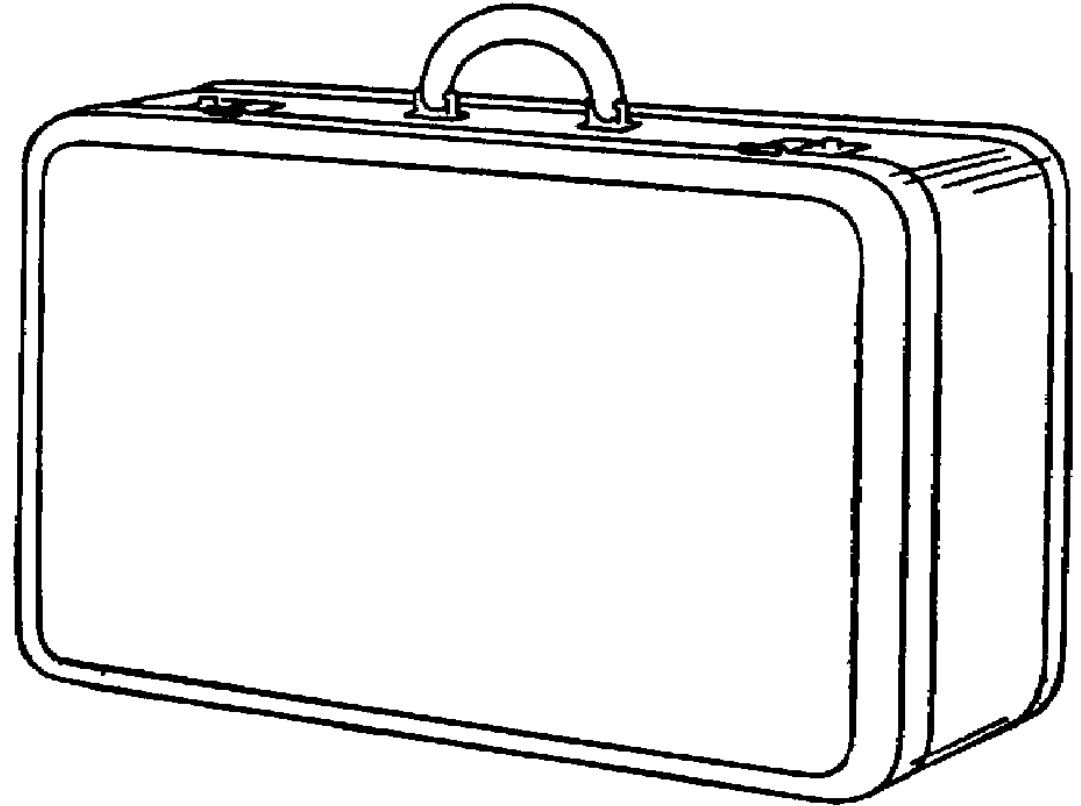
Cut out head, ears and arm shapes using the white craft paper.
Cut cotton ball in half keeping round shape. Slightly flatten cotton ball and glue to the paper head.
Use the black craft paper to cut out a nose and glue onto the cotton ball.
Use the marker or texta to draw a mouth onto the cotton ball.
Stick on googly eyes and ears.
Paste head and arms to your cup.
Ready for some Polar Bear puppet fun.
Perhaps you might like to add a pink ribbon just like the one Lulu wears.



Lulu needs a new tutu for her royal performance. Can you help by colouring the one below?



What should Lulu pack in her suitcase? Draw what you think she might need in the city.



Can you find the answers?

1.

Who did Lulu dance for in the big city?
2.

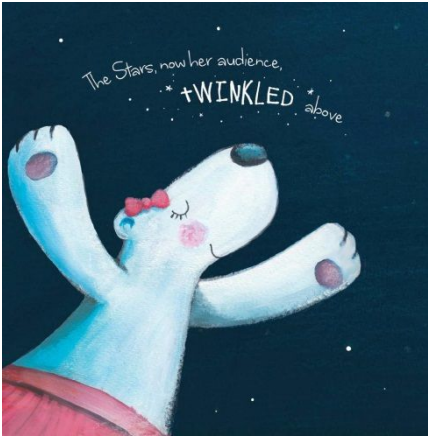
Where did Lulu sail to?
3.

How many pictures are hanging on Lulu’s bedroom wall?
4.

When the curtains drew back what did Lulu do?
5.

What had Lulu’s friends built for her when she returned home?
6.

How many friends were on the ice to welcome Lulu home?



Word Jumble.

uull	Lulu
lleyj	
dklitce	
tefebsutsrli	
wsoh	
ngsi	
ncdea	
vleo	
seinrdf	
medar	
nmbtaio	

Answers:

Lulu, jelly, tickled, butterflies, show, sing, dance, love, friends, dream, ambition.

